

## INSTRUMENT KNOBS — CASES & COVERS



### MODERN KNOBS

Black Styrene, 1/4" Brass Insert, Slotted Set Screw

Part No.	Diam.	Height	Skirt or Pointer Size
6126	5/8"	7/16"	
6126 Red	5/8"	7/16"	
6129	7/8"	19/32"	

### BAR KNOB

BK-1B	11/16"	1/2"	
-------	--------	------	--

### INSTRUMENT KNOBS—Full-Fluted Type

Black Bakelite, 1/4" Brass Insert, Slotted Set Screw

WA-4100	1-1/8"	5/8"	
WA-4101	1-3/8"	11/16"	
WA-4102	1-5/8"	3/4"	
WA-4103	2-3/8"	7/8"	

The above knobs supplied drilled and tapped for mounting skirts, pointers, or dials. Add Suffix (D)

### W/SKIRT

WA-4104	1-1/8"	51/64"	1-1/2"
WA-4107	1-3/8"	55/64"	1-3/4"
WA-4108	1-5/8"	7/8"	2-1/16"
WA-4109	2-3/8"	1"	3"

### W/WHITE OPAQUE PLASTIC POINTER

WA-4100Q	1-1/8"	11/16"	3/4"
WA-4101J	1-3/8"	3/4"	7/8"
WA-4102Q	1-5/8"	13/16"	1-1/4"
WA-4103W	2-3/8"	15/16"	1-9/16"

### DUO CONCENTRIC KNOB

Small Knob WA-101-C—Large Knob for 1/4" Shaft:

WA-107	1-1/4"	1-3/16"	D
--------	--------	---------	---

### BAR KNOBS

Black Bakelite, 1/4" Molded Hole, Slotted Set Screw, White Indicator Knob.

WA-1510	3/4"	9/16"	
WA-1500	1-1/8"	9/16"	
WA-1520	1-1/2"	3/4"	

### POINTER KNOBS

Black Bakelite, White Filled Pointer, for 1/4" Shaft, Set Screw

Part No.	Diam.	Height	Figure
WA-2300	1-1/4"	5/8"	A
WA-2300A*	1-1/4"	5/8"	A
WA-2350	2"	5/8"	A
WA-2350A*	2"	5/8"	A
*Brass Insert			
WA-2150	1-1/4"	9/16"	B

### ROUND KNOBS

1" Diam., 1/2" High

WA-1475	1/4" Molded Hole
WA-1475C	1/4" Brass Insert

### SKIRTED KNOBS

Molded Black Bakelite, Slotted Set Screw  
1-1/2" Diam. x 3/4" High

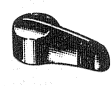
WA-1600	1/4" Molded Hole
WA-1600A	1/4" Brass Insert

7/8" Diam x 9/16" High

WA-1610	1/4" Molded Hole
WA-1610A	1/4" Brass Insert

### POINTER KNOB

WA-1550	1-1/8"	9/16"
---------	--------	-------



### LATEST SERIES INSTRUMENT KNOBS

Black Bakelite, slotted set screw, white marker line on skirt.

INSTRUMENT KNOBS WITH DECORATIVE SILVER INLAY. All Instrument Knobs are available with a spun aluminum inlay for decorative purposes. Write for quotation.

Part No.	Diam.	Height	Figure
WA-101	3/4"	1/2"	A
WA-101B*	3/4"	1/2"	A
WA-101C†	3/4"	1/2"	A
WA-102	1-1/8"	5/8"	A
WA-102B*	1-1/8"	5/8"	A
WA-103	1-1/4"	3/4"	A
WA-103B*	1-1/4"	3/4"	A
WA-104	1-1/2"	7/8"	A
WA-104B*	1-1/2"	7/8"	A
WA-105	2"	15/16"	A
WA-105B*	2"	15/16"	A
WA-106S	1-1/4"	3/4"	B
WA-106AG	1-1/4"	3/4"	B
WA-109	1-1/4"	5/8"	C
WA-109B*	1-1/4"	5/8"	C

\* 1/4" Brass Insert; † 1/8" Molded Hole; All others have 1/4" Molded Hole. S w/Silver Inlay. G w/Gold Inlay.

### STANDARD KNOBS—Pointer Knobs

Molded Black Bakelite, Slotted Set Screw  
1 1/16" Diam., 13/32" High

Part No.	Description
WA-1400	1/4" Molded Hole
WA-1400W	1/4" Brass Insert
WA-1400R	1/8" Molded Hole
1" Diam., 1/2" High	
WA-1470	1/4" Molded Hole
WA-1470C	1/4" Brass Insert

### ROUND KNOBS

1 1/16" Diam., 13/32" High

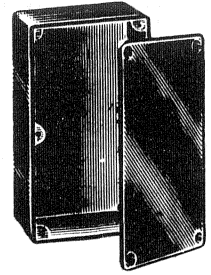
WA-1450	1/4" Molded Hole
WA-1450W	1/4" Brass Insert
WA-1450G	1/8" Molded Hole

### LEVER KNOBS

Black Bakelite. For use on intercoms, appliances, electronic equipment. 1/4" Brass Insert, Slotted Set Screw

Part No.	Diam.	Height
WA-2110A	1-5/8"	19/32"
WA-2100A	2-1/2"	5/8"

## CASES & COVERS



Molded Plastic 1/8" Thick w/Highly Polished Finish. Will withstand rugged usage. Cases suffixed BI have 6-32 brass inserts. Others have molded hole.

Part No.	Description
BC-136	3-25/32" L x 2-21/32" W x 1-15/32" Deep
BP-135	Flat Panel for above
BC-138	6" L x 3-1/2" W x 1-7/8" Deep
BC-138BI	W/Brass Inserts in 6 corners
BP-137	Flat Panel for above
BP-137A	Molded Cover for above
BC-140	6-1/2" L x 4-31/32" W x 2-5/32" Deep
BC-140BI	W/Brass Inserts in 4 corners
BP-139	Flat Panel for above
BP-139A	Molded Cover for above
BC-142	5-7/8" L x 3-1/16" W x 2-1/4" Deep
BC-141BI	8-3/8" L x 7-3/8" H x 3" Deep
BP-141	Flat Panel for above

Knobs above are available in other colors than black, with more than one set screw, with socket type set screws, and with special hot-stamped markings. Write for quotation. sales@galco.com

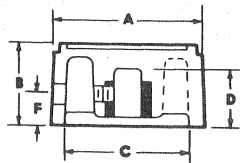
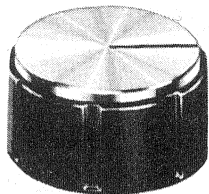
**ORDER NOW!**

**CALL:** TOLL FREE - 800-521-1615  
In Michigan - 810-542-9090

24 Hr. FAX Line  
**810-542-8031**

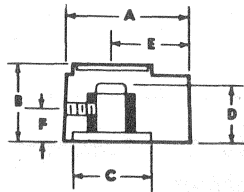
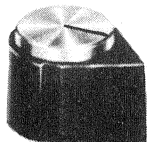


# INSTRUMENT KNOBS



WA-1200/WA-1208

DIMENSIONS						MOUNTINGS	
Part No.	A	B	C	D	F	Plastic Hole	Set Screw
WA-1200	1/2"	5/8"	—	7/16"	7/32"	1/4"	8-32
WA-1202	3/4"	5/8"	21/32"	17/32"	9/32"	1/4"	8-32
WA-1204	1"	11/16"	11/16"	17/32"	9/32"	1/4"	8-32
WA-1206	1-3/8"	3/4"	1-1/8"	17/32"	9/32"	1/4"	8-32
WA-1208	1-3/4"	13/16"	1-1/2"	17/32"	9/32"	1/4"	8-32



WA-1210

DIMENSIONS							MOUNTINGS	
Part No.	A	B	C	D	E	F	Plastic Hole	Set Screw
WA-1210	1"	5/8"	21/32"	17/32"	5/8"	9/32"	1/4"	8-32
WA-1212	1-1/8"	11/16"	11/16"	17/32"	1/2"	9/32"	1/4"	8-32
WA-1214	1-5/8"	5/8"	21/32"	17/32"	1-1/4"	9/32"	1/4"	8-32
WA-1216	1-1/4"	5/8"	21/32"	17/32"	5/8"	9/32"	1/4"	8-32

